



GLOBAL EDITION
January 2015
Number 64

Scotland's
**St Abbs &
Eyemouth**

Philippines
Anilao

Profile
**Terry
Gosliner**

White Sea
Ice Diving

Conservation
Goliath Groupers

Fundamentals of
Rebreather Diving

DIVING IN
Italy

DIRECTORY

X-RAY MAG is published by AquaScope Media Aps
Copenhagen, Denmark

www.xray-mag.com

PUBLISHER & EDITOR-IN-CHIEF
Peter Symes
Editor@xray-mag.com

**PUBLISHER, MANAGING EDITOR
& CREATIVE DIRECTOR**
Gunild Symes
Gunild@xray-mag.com

ASSOCIATE EDITORS
Scott Bennett, Toronto
Scott@xray-mag.com
Catherine GS Lim, Singapore
Cat@xray-mag.com
Michael Menduno, Berkeley
Michael@xray-mag.com
Barb Roy, Vancouver
Barb@xray-mag.com

Russia - Moscow
Andrey Bizyukin, PhD
Andrey@xray-mag.com
Svetlana Murashkina, PhD
Svetlana@xray-mag.com

ASSISTANT EDITORS
Roz Lunn, London
Roz@xray-mag.com
Robert Osborne, Toronto
Robert@xray-mag.com
Don Silcock, Sydney
Don@xray-mag.com

USA
Larry Cohen, New York City
Larry@xray-mag.com
Kelly LaClaire, Portland
Kelly@xray-mag.com
Bonnie McKenna, Houston
Bonnie@xray-mag.com

**ADVERTISING
UNITED KINGDOM**
Rosemary E Lunn, London
Roz@xray-mag.com

USA & INTERNATIONAL
Matthew Meier, San Diego
Matt@xray-mag.com

Contacts page: Xray-Mag.com

SENIOR EDITOR
Michael Symes, PhD - Science

SECTION EDITORS
Michael Arvedlund, PhD - Ecology
Scott Bennett - Travel, Sharks
Andrey Bizyukin, PhD - Features
Larry Cohen - Photo & Video
Kelly LaClaire - Marine Mammals
Catherine Lim - News, Books
Roz Lunn - Equipment News
Bonnie McKenna - Turtles
Michael Menduno - Tech
Robert Osborne - Features, Profiles
Ila France Porcher - Sharks
Don Silcock - Photo & Video

COLUMNISTS
Gretchen Ashton - Dive Fitness
Pascal Bernabé - Tech Talk
Leigh Cunningham - Tech Talk
Andy Murch - Shark Tales
Mark Powell - Tech Talk
Cindy Ross - GirlDiver
Cedric Verdier - Tech Talk
Lawson Wood - UW Photography

CONTRIBUTORS THIS ISSUE
Andrey Bizyukin, PhD
Scott Bennett
Larry Cohen
Marco Daturi
Steve Jones
Millis & Brian Keegan
Steve Lewis
Gareth Lock
Rosemary E Lunn
Alba Mazza
Michael Menduno
Betty & Dan Orr
Ila France Porcher
Simon Pridmore
Michael Salvatoreza
Don Silcock
Margarita Solotskaya
Francesco Spaggiari
Walt Stearns
Gunild Symes
Peter Symes
Lawson Wood
Meredith Woolnough
Christopher P. Weaver

Ornate ghost pipefish, Anilao, Philippines. Photo by Steve Jones



contents

6 ▶
WRECK RAP: PANAREA III
BY FRANCESCO SPAGGIARI
AND ALBA MAZZA

45 ▶
RUSSIA'S WHITE SEA
BY MICHAEL SALVAREZZA
& CHRISTOPHER WEAVER

columns...

70 ▶
**SCUBA CONFIDENTIAL:
SCUBA'S SILENT KILLER**
BY SIMON PRIDMORE

14 ▶
**DIVING
IN ITALY**
BY MARCO DATURI

51 ▶
**GOLIATH GROUPERS
FLORIDA**
BY WALT STEARNS

82 ▶
**TECH TALK: FUNDAMENTALS
OF REBREATHING DIVING**
BY PASCAL BERNABÉ

27 ▶
**GROTTA GIUSTI
ITALY**
BY PETER SYMES

61 ▶
**ST ABBS & EYEMOUTH
SCOTLAND**
BY LAWSON WOOD

85 ▶
**UW PHOTO:
COLD WATERS**
BY LAWSON WOOD

32 ▶
**ANILAO
PHILIPPINES**
BY STEVE JONES

75 ▶
**DOC GRUBER: PIONEER
OF SHARK SCIENCE, PART I**
BY ILA FRANCE PORCHER

92 ▶
**PORTFOLIO:
MEREDITH WOOLNOUGH**
EDITED BY GUNILD SYMES

42 ▶
**PROFILE:
TERRY GOSLINER**
BY STEVE JONES

plus...
EDITORIAL 3 ▶
NEWS 4 ▶
WRECK RAP 6 ▶
TRAVEL NEWS 12 ▶
EQUIPMENT NEWS 44 ▶
BOOKS & MEDIA 69 ▶
MARINE MAMMALS 72 ▶
SHARK TALES 75 ▶
PHOTO NEWS 90 ▶

Not yet subscribed to
X-RAY MAG? Sign up now!
It's FREE! QUICK! EASY!
[click here...](#)

SUBSCRIPTION

X-RAY MAG International Edition in English is FREE

To subscribe, go to: www.xray-mag.com

COVER PHOTO: Coleman shrimp on fire urchin, Anilao, Philippines
Photo by Steve Jones



Diving Russia's Arctic
Beneath the White Sea

Text and photos by Michael Salvarezza and Christopher P. Weaver

Siberian huskies are hardy dogs well suited for the arctic environment.
 PREVIOUS PAGE:
 Diver at triangular cut ice hole in White Sea



We gathered in the frigid pre-dawn hours, our gear and luggage piled in front of the snowmobiles and our noses freezing in the -22°F (-30°C) temperatures. It was time to be saying good bye to our Russian hosts after a week of diving the frozen White Sea but we were tempted to linger just a little bit longer. It was during these last few moments, as we stood under a curtain of stars on a deep, dark winter's night in Russia that we reflected back on the events of the past week.



The authors entering the water

We had come to this remote spot a week earlier filled with both excitement and anxiety over the prospects of exploring the icy waters of the White Sea. Nestled alongside the Kola Peninsula, and straddling the Arctic Circle, the White Sea, technically part of the Barents Sea, is the only inland sea to completely freeze in the winter. Our base of operations for this ice-diving expedition

was the Arctic Circle Dive Lodge, located near the seaside village of Nilma and just north of the Arctic Circle. To get here, we chose to fly to Finland, arriving in the alpine town of Kuusamo. After spending one day dog-sledding in a National Forest in Finland's fabled Lapland, it was time to complete our journey with an over land transit into Russia.

An 8-hour white knuckle ride across the border and through the Russian wilderness brought us to the lodge, ready to dive.

Ice diving

Diving the White Sea in winter requires preparation, equipment, fortitude and, most important, adequate training in ice diving techniques. With surface tempera-





White Sea

The dive team on the way to the dive site across the frozen surface of the White Sea (left); The dog sled team journeys deep into the magical forests in the Lapland region (far left); Snowmobiles are used to go from base camp to the dive sites (lower left); Divers must be prepared for extreme conditions (below)

the icy plunge into the magical world beneath the frozen sea.

Anemone Rock. Our first dives in the White Sea took us to a site known as Anemone Rock. Here, in 45 FSW (14m), a huge boulder lies on the bottom, perhaps 20ft (6m) in height. This rocky outcrop rises up from the slope of Bolshoy Krestovy (Big Cross) Island. Some say it is as big as a three-story building and shaped like a dragon's

tures routinely dipping as low as -22°F (-30°C), and with snowfall an almost constant factor, divers must be prepared for extreme conditions. The entire White Sea is frozen with almost three feet of ice and the ice is covered with six inches or more of snow. Once below the ice, divers will find water temperatures hovering near 28°F (-2°C).

Although visibility is generally good, the water can be extremely dark. Many of these dives can almost be considered night dives due to the lack of ambient light penetrating the ice ceiling. Fully functioning cold water gear and good training are essential.

The diving protocol employed here provides everything necessary to protect divers from the elements. Divers and gear are first transported from the lodge to the dive sites via snowmobile. The dive

sites vary and can be as close as a ten-minute run or as far as a 45-minute trek across the ice covered sea.

Once on site, specially constructed small wooden huts are used as shelters for donning or doffing equipment. Each hut is equipped with a wood burning heating system so divers can gain much needed warmth before, between and after dives. Indeed, the temperatures inside the huts are almost too hot and divers will often be seen propping the doors open to let in some cool air!

The huts are on skis and can be moved from location to location. They are generally placed within a few feet of the dive site, usually a triangular cut made into the ice and referred to locally as a "Maina". Once suited up, divers shuffle to the entrance and begin





White Sea

CLOCKWISE FROM FAR LEFT: Arctic sculpin; Starfish can be found beneath the ice; Tunicates filter the cold Arctic water; Frilly anemone can be found under the ice

tooth. The seabed is very silty, so care must be taken so as not to stir up the bottom.

Anemone Rock is so named because of the profusion of life that literally covers this massive structure. Frilled anemones, colorful tunicates, beguiling nudibranchs and a wide variety of other small invertebrate life abound on this oasis of life in an otherwise nondescript sloping bottom.

Wedged inside cracks in the rock are wolf fish, expertly positioned to avoid the range of our cameras! Looking more closely alongside the rock, we did find small bottom dwelling fish such as the Arctic sculpin. Measuring close to four inches (10cm) in length, these wary denizens seemed unfazed by our attempts to photograph them—perhaps they were too cold to move!



Islands. Subsequent dives took us to dive sites alongside some of the islands in the White Sea. Small Cross Island is a small rocky outcropping with a tumbling, rocky slope, which we eagerly explored,

photographing the kelp (laminaria) covered rocks and the dramatic ice ceiling above. Diving beneath the ice affords the diver an out-of-this-world experience as the surface ice takes on a green-

ish tint from the surrounding water.

Towards the end of our week's expedition, the temperatures plummeted from a rather comfortable 20°F (-7°C), to a bone-chilling -22°F

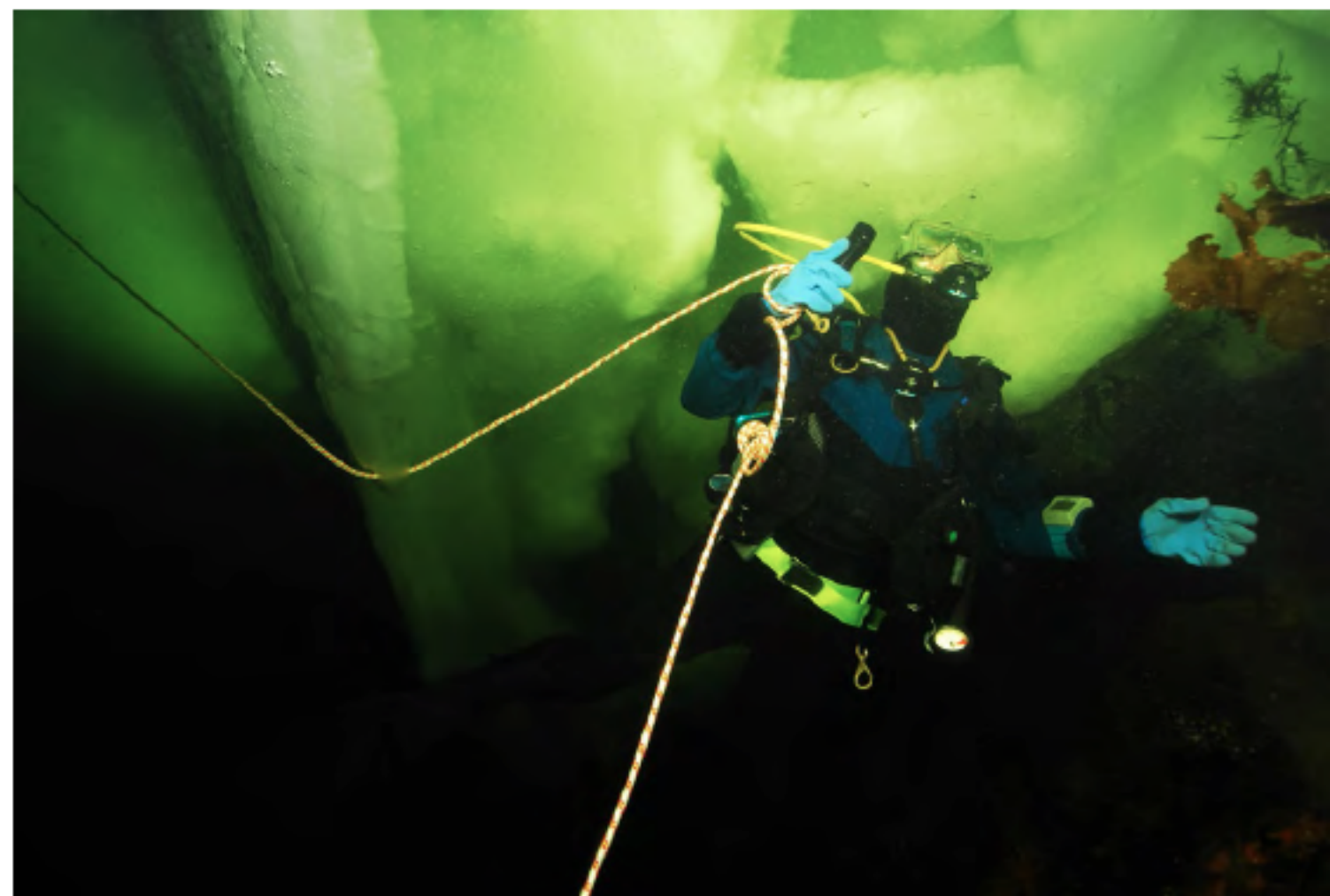


CLOCKWISE FROM FAR LEFT: Divers explore ice formations of Biofilter Bay; Divers enter and exit through the hole in the ice surface; Divers are secured to the surface using a system of ropes; Divers find clear, dark water beneath the ice



(-30°C). Suddenly, our dives became more arduous as we struggled to stay warm and keep our equipment functioning. Residual water would freeze instantly in the air and our equipment became encased in ice in a matter of minutes. The entrance to the dive site would become a slushy mix of ice and snow, and any water exposed through the hole would also start to quickly freeze solid. As we descended through a two-foot (.6m), tunnel of slush and ice, it took all of our self-control not to breathe off the regulators until fully submerged lest we risk causing a free flow. And once under the ice we preferred not to think too hard about whether the surface tenders were keeping the hole cleared of solid ice.

Biofilter Bay. At Biofilter Bay, a location named for its abundance of shellfish and filter feeders covering its rocky bottom, we



descended into a cathedral of ice. Biofilter Bay is nothing extraordinary in summer, but it completely changes in winter. The most interesting thing about ice diving here is the ice itself. Because of the strong tidal currents,

the high and low water levels differ by up to 6ft (2m), and the tidal cycle lasts about 12 hours. As the ice rises and falls within the water column, it freezes to the rock faces and other ice formations. It then breaks

The spectacular northern lights, or aurora borealis (left); Authors Michael Salvarezza and Christopher P. Weaver with sled dogs (below)

fabulous and magnificent beauty. And now, as we stood in the bitter cold waiting for our transport back to Finland, we swapped stories and reflected on our experiences. Suddenly, as if on cue, a shout rang out in the night: "Aurora!"

We all excitedly scrambled back to the edge of the frozen sea, our feet standing in newly frozen snow, and we looked up to the sky. There, a shimmering, undulating miracle of nature was being displayed across the night sky—the aurora borealis (northern lights).

The script could not have been written more perfectly. It was as if we were being bid farewell by the Arctic itself. With brilliant greens and yellows, the Aurora danced for us as we departed—a dance of indescribable beauty that has beguiled people for millennia in the northern latitudes. And one that will continue for millennia to come. ■

WHITE SEA INFORMATION

DIVE TIME: Usually 20-45 minutes, diver dependant

BREATHING GAS: Air, nitrox is not available

DEPTH: Rope dependant; usually not more than about 65ft (20m)

WATER VISIBILITY: 50-150ft (15-50m)

ICE THICKNESS: Up to 5ft (1.5m)

WATER TEMPERATURE: 30-28°F (-1°C to -2°C)

AIR TEMPERATURE: 43°F to -22°F (+6°C to -30°C)

SALINITY: 27.5-28 parts per thousand, lower than the mean salinity of the Arctic Ocean

SURFACE INTERVALS: Heated huts are available for divers to don/duff gear, and to relax between dives

TRANSPORT: Snowmobiles are used to transport divers and equipment to and from the dive sites

ASSISTANCE: Diver tenders help divers exit the dive hole, ladders are not used

Michael Salvarezza and Christopher P. Weaver are underwater photographers based in New York. For more information on expeditions to the White Sea, visit: ecophotoexplorers.com/white-sea.asp



off and tumbles around bumping into each other, then freezes again to these surfaces. This constant tumbling and moving about allows the ice to carve amazing underwater ice sculptures.

As we drifted along the sloping shoreline just under the ice ceiling, we were able to witness and explore these chaotic jumbles of

fragmented ice crushed together in magnificently sublime formations. Huge slabs of ice along with bulbous ice boulders floated in the frozen sea, and as we swam in and around these icy monuments to nature's true beauty and power, we became reflective of how special this place really is.

With only our line to lead us back to the opening and to the spine tingling cold of the world above, we were truly encapsulated in the silence of the frozen ice spectacle below. We floated among these grand ice displays, becoming one with its frozen beauty before reluctantly returning to the entry hole and the surface.

Aurora

Beneath the White Sea, in the mysterious and seldom visited Russian Arctic, we had experienced moments of true physical hardship along with experiences of